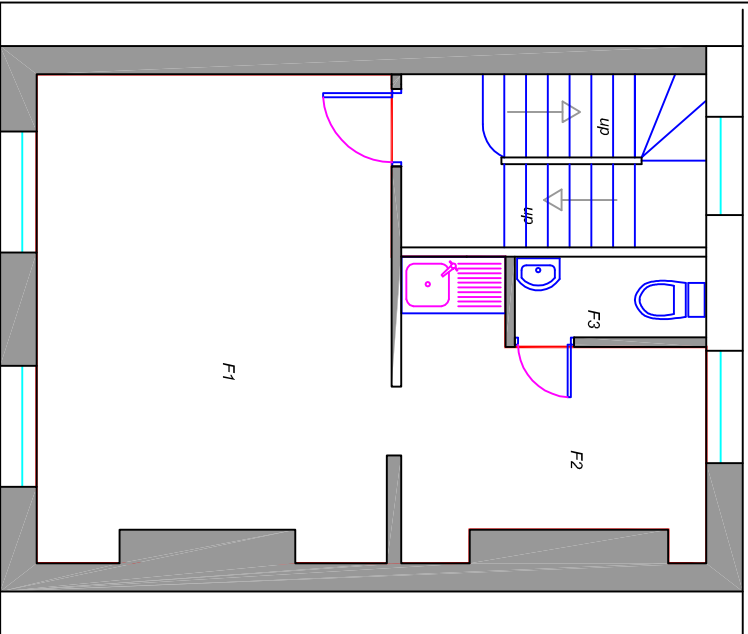
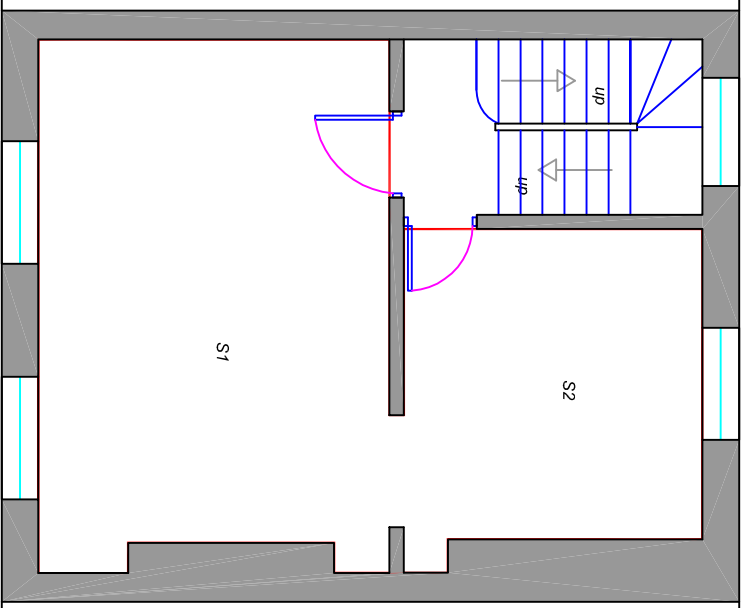


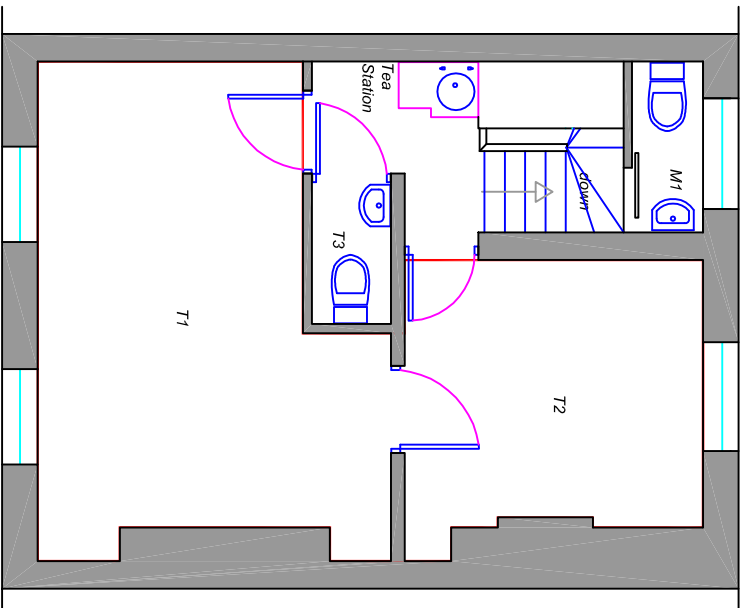
**a) LAYOUTS FOR ILLUSTRATION  
 PURPOSES ONLY**



**First Floor**  
 NIA : 26 m<sup>2</sup> (284 ft<sup>2</sup>)



**Second Floor**  
 NIA : 30 m<sup>2</sup> (324 ft<sup>2</sup>)



**Third Floor**  
 NIA : 27 m<sup>2</sup> (287 ft<sup>2</sup>)

**Total NIA (1st, 2nd & 3rd Floor) : 83m<sup>2</sup> (895 ft<sup>2</sup>)**

<b>Client:</b>		<b>SARJU Inc</b>	
<b>Programs:</b>		<b>21 GOODGE STREET LONDON, W1P 1FD</b>	
<b>Drawings:</b>		<b>First, Second &amp; Third Floor Plans</b>	
<b>Scale:</b>	<b>Date:</b>	<b>Drawn:</b>	<b>Date:</b>
NTS	Mar 2019	HP	
<b>Job Ref:</b>	<b>Drawn By:</b>	<b>Job No.:</b>	<b>Date:</b>
	HP	RJ29 19101 - 05	
<b>Revision:</b>			
<b>HP</b>			

© RJ29 Consulting. All rights reserved. This document is the property of RJ29 Consulting. It is not to be used for any other project without the written consent of RJ29 Consulting. The content of this document is confidential and its disclosure to any third party is strictly prohibited.